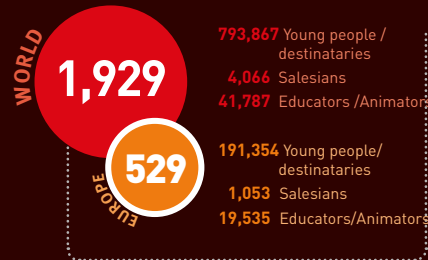
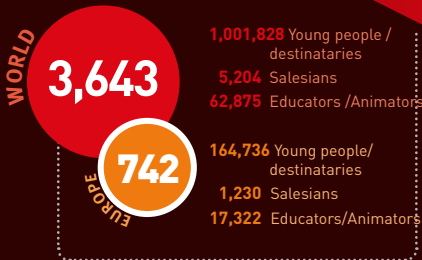


SALESIANS OF DON BOSCO PRESENCE AND CHALLENGES

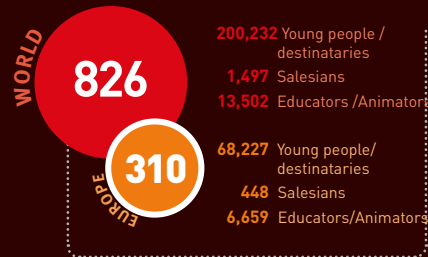
YOUTH CENTRES - ORATORIOS



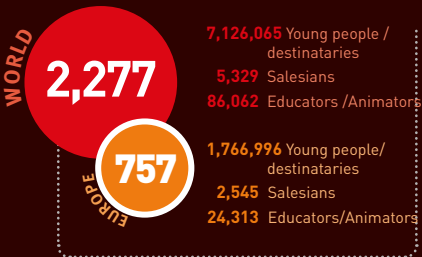
SCHOOLS



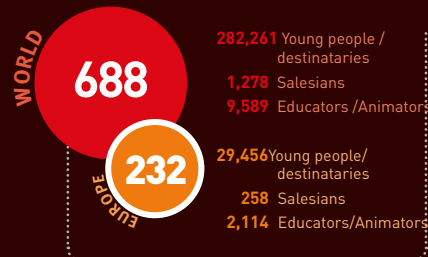
T-VET CENTRES



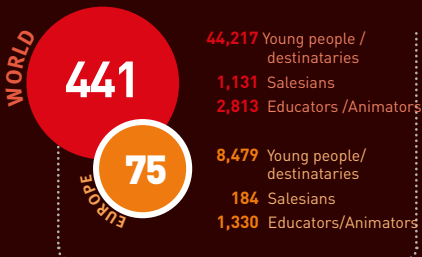
PARRISHES



SOCIAL WORKS



RESIDENCES/COLLEGES



WORKS AND SOCIAL SERVICES FOR YOUTH-AT-RISK





WHAT WE MEAN? Our approach to... Youth at Risk

As he went through the streets of Turin Don Bosco saw the dangers faced by needy youth and responded to their difficulties and poverty by opening new types of pastoral services. His insight told him that it was important to give an immediate response to their problems but also and above all, to prevent the causes through a holistic educational approach.

Poverty and exclusion are on the rise day by day even to the extent of tragic dimensions. Poverty harms the individual, the community and especially the young to the point where it becomes a structural reality and global way of life. The option for poor youth and those abandoned and at risk, has

WHO DOES IT? The Educative Community

Don Bosco considered the experience of community important and offered abandoned youngsters a new kind of family in the Oratory where they could grow and prepare for life. The enterprising involvement of educators and young people on a daily basis requires cooperation from professionals: sociologists, psychologists, doctors, lawyers, pedagogues, social educators. These kinds of works are developing the very best kinds of volunteer service experiences. Equally important are connections and regular dealings with family members and other institutions or groups in the area working in the same field.



WHAT WE DO? Our Educative Proposal

We develop a great variety of projects, services and facilities for youth at risk:

- works for street children: school/home, day care centres, family homes, reception centres for refugees;
- services for young people with special needs: minors under protection; offenders; child soldiers; children who are exploited or abused;
- attention to immigrants: literacy; psycho-pedagogical support; legal advice; contributions to social and professional skills;
- accompaniment for recovery and rehabilitation (drugs, HIV-AIDS);



HOW WE DO IT? Our Educative and Pastoral Project

A holistic and systematic educative proposal is crucial to help the young to restructure and unify their interior world. A process of identification brings this about through vital contact with individuals and institutions with a strong sense of identity, but which are also respectful of diversity and basic freedoms.

The choice for prevention: this is for us an educational approach that avoids problems by preventing their negative effects from taking hold. Our response to youth exclusion is also a social and political one. We promote a culture of 'the

