

SALESIANS OF
DON BOSCO

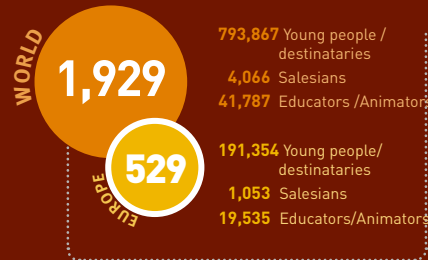
PRESENCE AND CHALLENGES



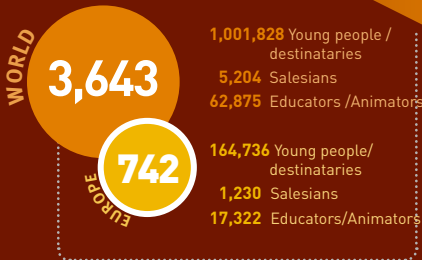
SCHOOL



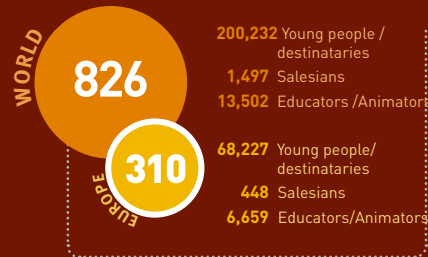
YOUTH CENTRES - ORATORIOS



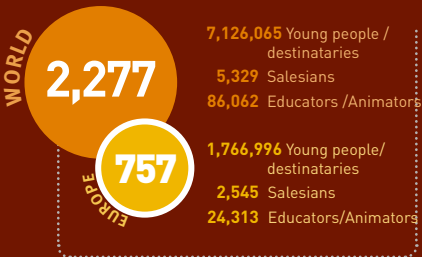
SCHOOLS



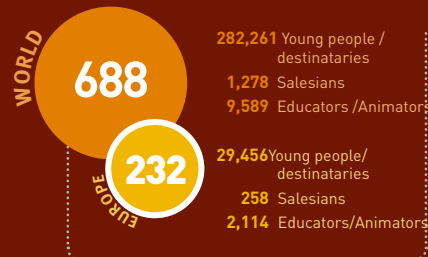
T-VET CENTRES



PARRISHES



SOCIAL WORKS



RESIDENCES/COLLEGES



WHAT WE MEAN?

Our approach to... Schools

Ever attentive to the needs of the young, Don Bosco extended his commitment by developing the Salesian school. He sensed that among the many ways of reaching the young, formal schooling was an essential tool for education since it provided society with a meeting point for the development of culture, ethical standards and faith. We consider the school as a privileged cultural mediation in education, an institution geared for the formation of personality. The school environment has developed in keeping with the times and in response to the needs of the young and of society.

WHO DOES IT?

The Educative Community

The students themselves are the primary players in the formation process: participating in a creative way in the various stages of this process, they grow in relational skills through their schooling and formation.

Educators create a 'family' together with the young, a youthful community wherein the interests and experiences of young people are the starting point of everything in their education. The teachers not only teach, but 'assist', work, study and pray together with the pupils.

Parents dialogue with the educators; they play their personal part through various opportunities for contact with the school with respect to planning and evaluation processes.



WHAT WE DO?

Our Educative Proposal

We give preference to the educational experience and assure its well-defined processes. With this in mind, Salesian schools offer a quality educational and cultural proposal in which:

- **sensitivity** to everything around us, overcoming the negative impact of conformism;
- the ability to analyse **the situation and re-awaken attitudes** of service and solidarity;
- the value of the **family** and the contribution that young people can offer;
- **'open door'** opportunities for useful activities that benefit the local area.

HOW WE DO IT?

Our Educative and Pastoral Project

The Salesian school reaches its goals through Don Bosco's style and approach to education. The following elements in practice provide the typical features of our educational centres:

- **animating, guiding and co-ordinating things in an oratorian way, thus making the institution a family where the young feel 'at home';**
- **emphasising personal relationships in education based on trust, dialogue and the presence (assistance) of the educators among the young;**
- **taking on board the integrity of life of the young, where educators share their interests and promote leisure activities like theatre, sports, music and art;**
- **preparing them to responsibly assume active citizenship in family life, civil society and their faith-community.**