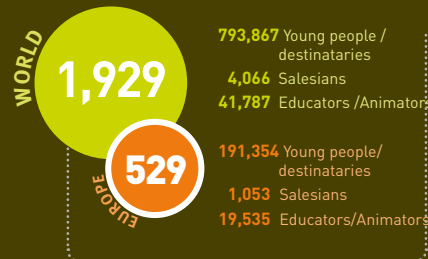


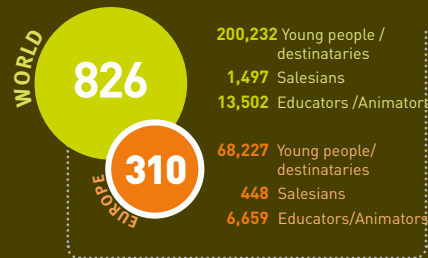
SALESIANS OF DON BOSCO

PRESENCE AND CHALLENGES

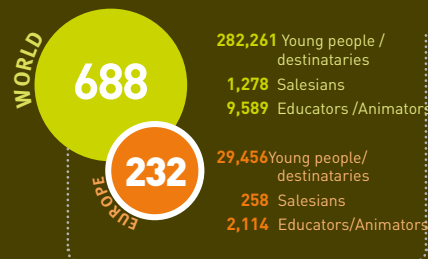
YOUTH CENTRES



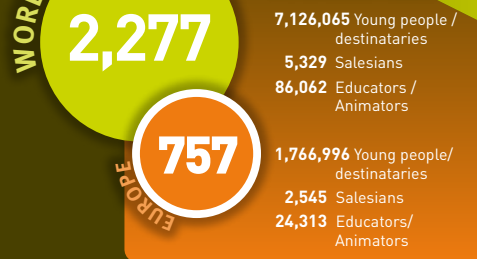
T-VET CENTRES



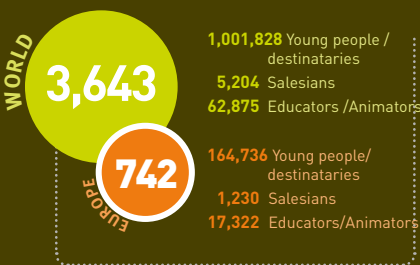
SOCIAL WORKS



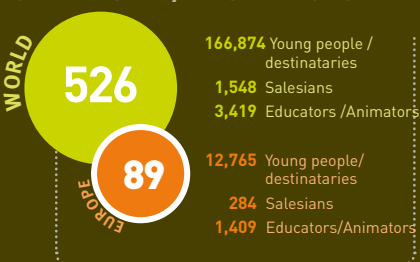
PARISHES



SCHOOLS



UNIVERSITY / RESIDENCES



PARISH



DBI
DON BOSCO
INTERNATIONAL

WHAT WE MEAN?

Our approach to...

Don Bosco's apostolic zeal for the poorest youth of Turin led him to create a parish for young people who found themselves without a parish to belong to. During his time, Don Bosco accepted seven parishes. He focused on issues that most concerned him: the priority of giving attention to the young especially the poorer among them, as well as the

identity of the Salesian parish priest who served in communion with the bishop and the diocesan clergy.

The option for young people in the parish entrusted to the Salesians is not exclusive or discriminatory, but a preferential option. This option is a precious gift for the mission in the whole faith-community.



WHO DOES IT?

Educative and Pastoral Community

The parish entrusted to the Salesians takes up a common mission involving responsibility shared by the largest possible number of people. It is a **community of believers** which promotes a *family atmosphere* and encourages lay people to take a significant role in the mission of spreading the Gospel message.

The parish is entrusted to the **Salesian religious community**, which

accompanies the members of the Salesian Family who collaborate in the development of the project.

The parish community considers the **young people to be members in their own right**. This charismatic presence ensures attention to adolescents and youth, with a positive interest in their world, their concerns, experiences and expectations.

WHAT WE DO?

Educative and Pastoral Proposal

The parish offers everyone a *systematic proposal of evangelisation and education in the faith*. It promotes first proclamation to those who are far away, and offers gradual education in the faith especially for families. The parish is a *community where one can experience the values most characteristic of Salesian spirituality*: joy; hope and promotion of solidarity and communion. The parish community cultivates human relationships, ensuring

that people and groups feel *recognised, accepted, included*. Our ecclesial communities represent the appropriate place for daily Christian experience.

Therefore, its pastoral, evangelical nature should reflect the **preferential option for the poor and needy**.

HOW WE DO IT?

Our Educative and Pastoral Project

- The parish **creates and offers gradual and diversified programmes in faith education**, particularly for young people and families.
- Another parish activity is to encourage membership of groups in the Church fostering **group movements, youth communities and Salesian Family Groups**.
- By fostering growth of an active faith, the parish educates to the **social**

dimension of charity, building a culture of solidarity.

- The parish is a community that practises **liturgy and the sacraments**: celebrating them with dignity and beauty.
- The parish community aims to be a **formation centre** for lay people who are dynamic and committed.